

Program Registration

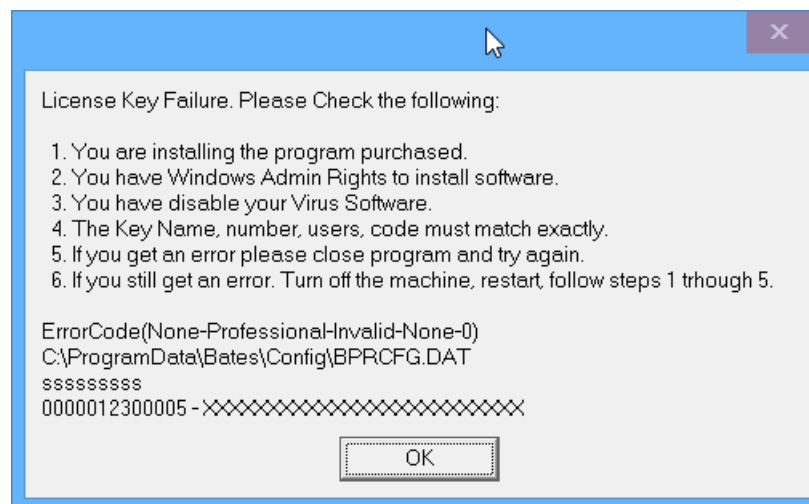
To register your Bates Professional program Click on the “Registration” button on the main screen. This button will disappear after registration. You may return to the registration screen after registration by pressing Utility button and selecting



At the Registration screen enter your firm name, order number, the number of users and registration key.

The Registered To name, Order Number, Number of Users (network versions only), and Registration Key must be typed in **EXACTLY** as it was sent to you. This information is case sensitive.

If there are any errors in the entry, your program will remain in DEMO mode. You will get the Invalid key screen. **If you get this Invalid Key screen**



To access the "Registration Screen" after the first Registration of the program type *** (shift 8 for *) into the user initials entry box and press enter. Keep your Activation Key in a safe place for future use.

